

NEW STYLE



WOMEN POLO DRESSES

STDW162 - STELLA PAIGER



The women's polo dress

Piqué
 100% Organic ring-spun combed cotton
 Medium Fit
 230 GSM

- Set-in sleeve
- Flat knit rib on collar
- Inside heavy single jersey back neck tape
- Front placket with 2 buttons in matching body colour
- Side panels in self fabric
- Single needle topstitch at shoulder seams
- Sleeve Hem and Bottom hem with narrow double needle topstitch

WHITES

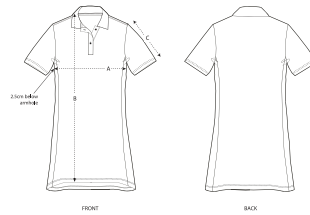


COLORS



ESSENTIAL

HEATHERS



SIZES	XS	S	M	L	XL	XXL
A Half Chest	42	44.5	47.5	50.5	53.5	56.5
B Body Length	88.5	90.5	92.5	95.5	96.5	96.5
C Sleeve Length	24.5	24.5	25.5	25.5	26.5	26.5

Combo options



Stella Paiger AOP

Printing Specifications

For suitable print techniques, please download our printing guide

Certifications & memberships



Wash Instructions

Wash similar colours together, no ironing on print, wash and iron inside out.

